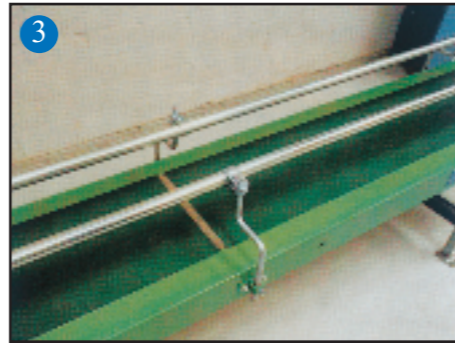


## conveyor GF 100

### Lateral guides

A conveyor system is only as good as the extent to which it adapts individually to the material to be conveyed. This includes the lateral guides. They are largely responsible for the safe and secure steering of the goods res. they prevent the shifting or overturning of the goods to be conveyed.

The GF 100 is equipped with different lateral guides e.g. rigidly bolted angular profiles of different dimensions or adjustable roller guides with steel or plastic tubes.



### Technical data HaRo® belt conveyor "GF 100"

Lateral profile: C-100/40  
Gliding plate: 2 mm  
Element length:  
minimum: 500 mm  
maximum: 6000 mm  
Coupling units with one drive up to : 12.000 mm  
Nominal width:  
minimum: 200 mm  
maximum: 1600 mm  
in 50 mm increments  
Drive and idler pulley: 108 mm  
Diameter of spindle: 25 mm  
Control rollers: 60 mm

- 1 Lateral guiding as bolted angular profile with output slide
- 2 Lateral guide as profile construction (for 200 litre drums)
- 3 4 Lateral guide with steel tube width- and height-adjustable.
- 5 Belt conveyor track with perforated cover and disconnecting traction chains.



**Rüthen**  
Phone 0 29 52/817-0  
Fax 0 29 52/8 17-30  
Industriestr./Möhnetal 30  
D-59602 Rüthen

**Wermelskirchen**  
Phone 0 21 96/9 44-32  
Fax 0 21 96/9 44-90  
Elbringhausen 22-25  
D-42929 Wermelskirchen

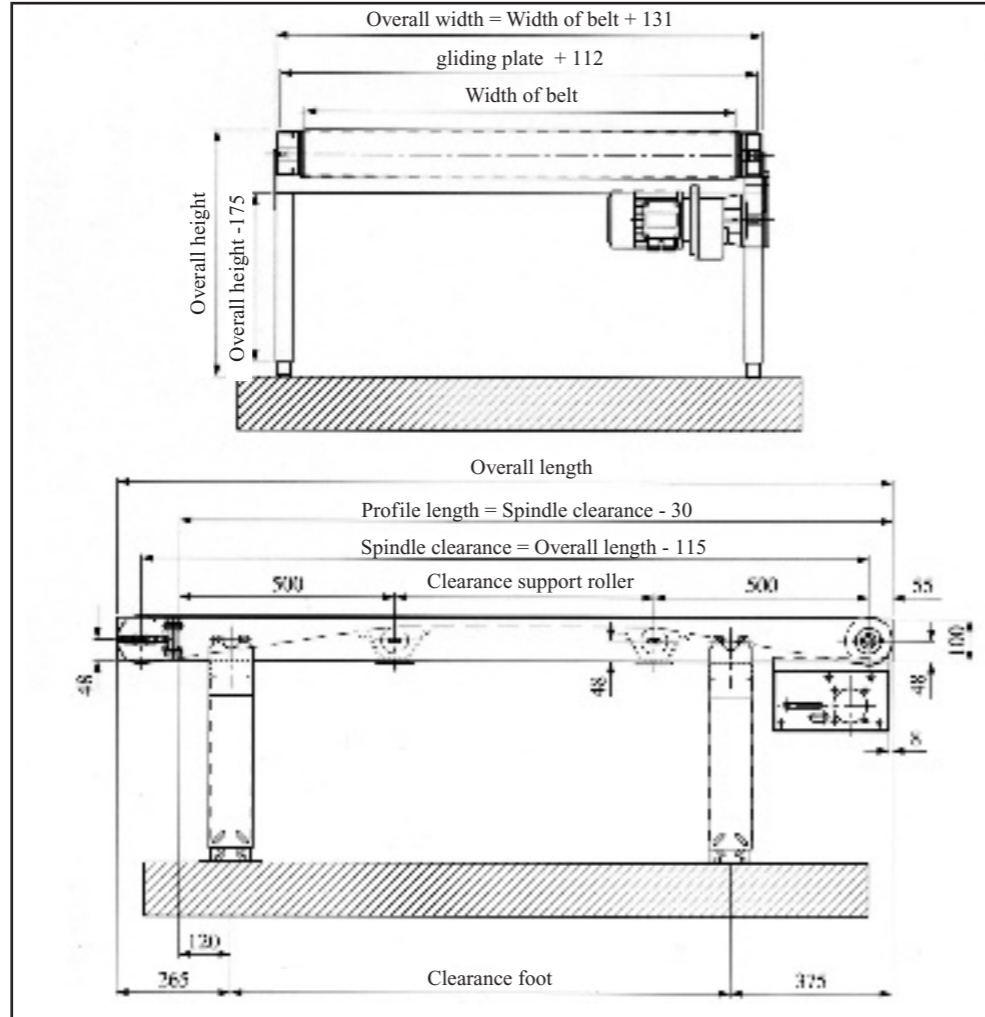
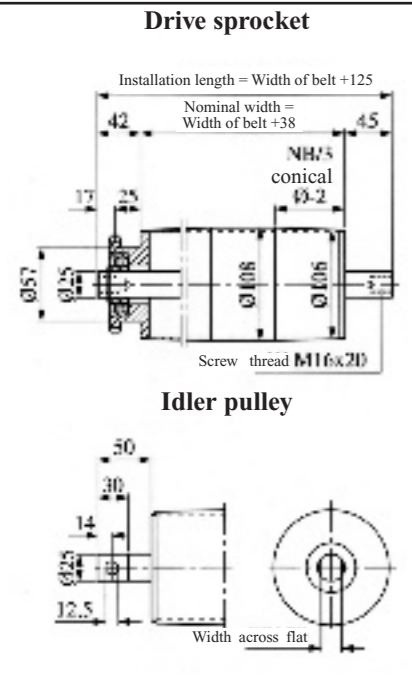
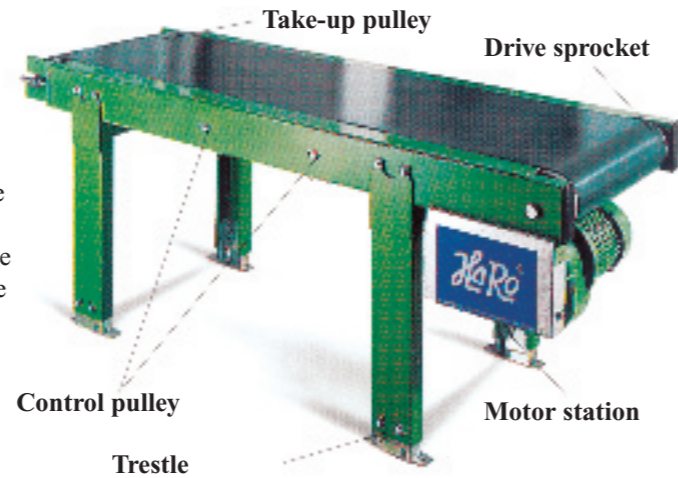
**Leipzig**  
Phone 03 42 93/2 92 70  
Fax 03 42 93/2 96 77  
Grethener Str. 9  
D-04668 Leipzig/Großsteinberg

Or visit our website in the Internet:  
<http://www.haro-gruppe.de>  
Email: [info@haro-gruppe.de](mailto:info@haro-gruppe.de)

# Belt conveyor GF 100

## Stable construction to the last detail.

The HaRo® belt conveyor GF 100 has been part of the HaRo® System family for many years and has earned a consolidated position in the conveying of piece goods up to 200 kg in weight. Apparently effortlessly and practically noise-free, it brings cartons, cases, tyres, wheel rims, vegetable trays and many more objects quickly and precisely to the required location. This range is distinguished by the stable profile steel construction in the design of the legs and the side members. Welded plates and traverse reinforcements allow the belt to slide evenly. Different belts can be applied according to the material to be conveyed and the requirements.

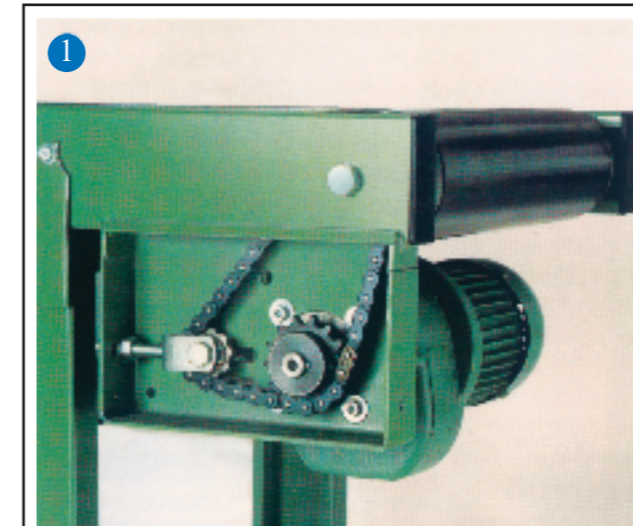


The large driving and idler pulleys are a distinctive feature with a diameter of 108 mm. Precision ball bearings form the crown of the shell which is rotated spherically to ensure accurate guidance of the belt and safe and secure drive.

### conveyor GF 100

#### Motor station

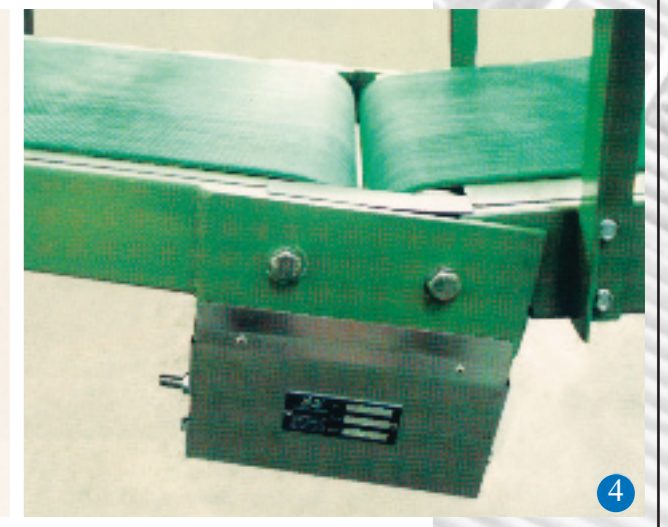
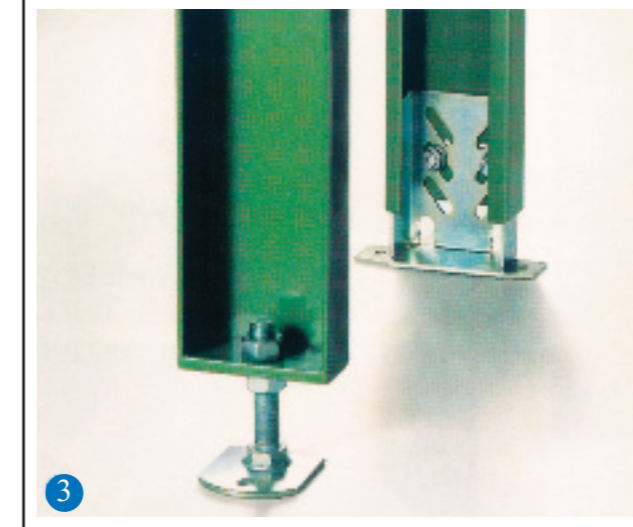
The spur gear drive motor together with the flange is distinguished by good accessibility and simple exchangeability. The motor station housing is easily opened from the side, the driving sprocket, the tension and the chain drive are located behind the cover and easily accessible.



### conveyor GF 100

#### Idler pulley / mounting bracket

The idler pulley is located opposite the drive unit. The belt return idler pulley is mounted opposite the belt drive unit. It has a crowned shell and a well-dimensioned mounting bracket and provides adequate tension adjustment even for extreme belt versions. The control rollers are positioned in slotted holes. They have the task of guiding the belt precisely.



### conveyor GF 100 construction

leg construction is manufactured in two designs. According to load, overall height, degree of ascent and the state of the ground, either the C-profile 100/40 with adjustment show or the U-profile 120/60 with threaded spindle can be selected. Extreme heights are additionally reinforced lengthwise, transversely and diagonally. Roof or wall disconnections (not vertical) are applied for extreme heights and special demands.

### conveyor GF 100

#### Ancillary entrance and exit belts

A conveyor system is only as good as the extent to which it adapts individually to the material to be conveyed. This includes the lateral guides. They are largely responsible for the safe and secure steering of the goods res. they prevent the shifting or overturning of the goods to be conveyed. The GF 100 is equipped with different lateral guides e.g. rigidly bolted angular profiles of different dimensions or adjustable roller guides with steel or plastic tubes.

